

MONTHLY MEMBERSHIP PROGRESS REPORT

LOCATION IOWA

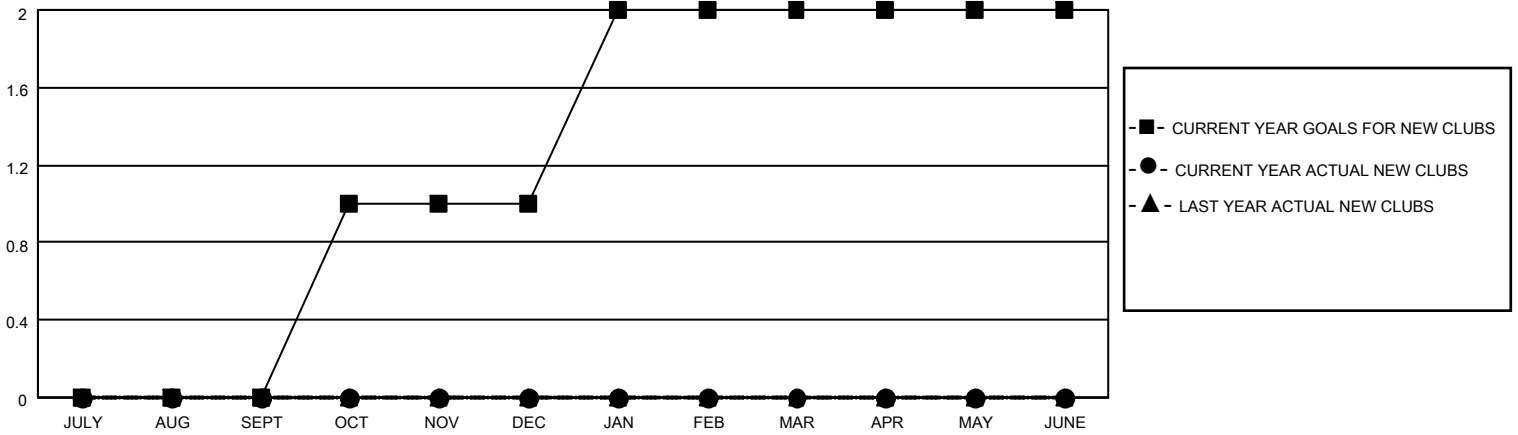
District 9 NC

Results as of: 3/31/2021

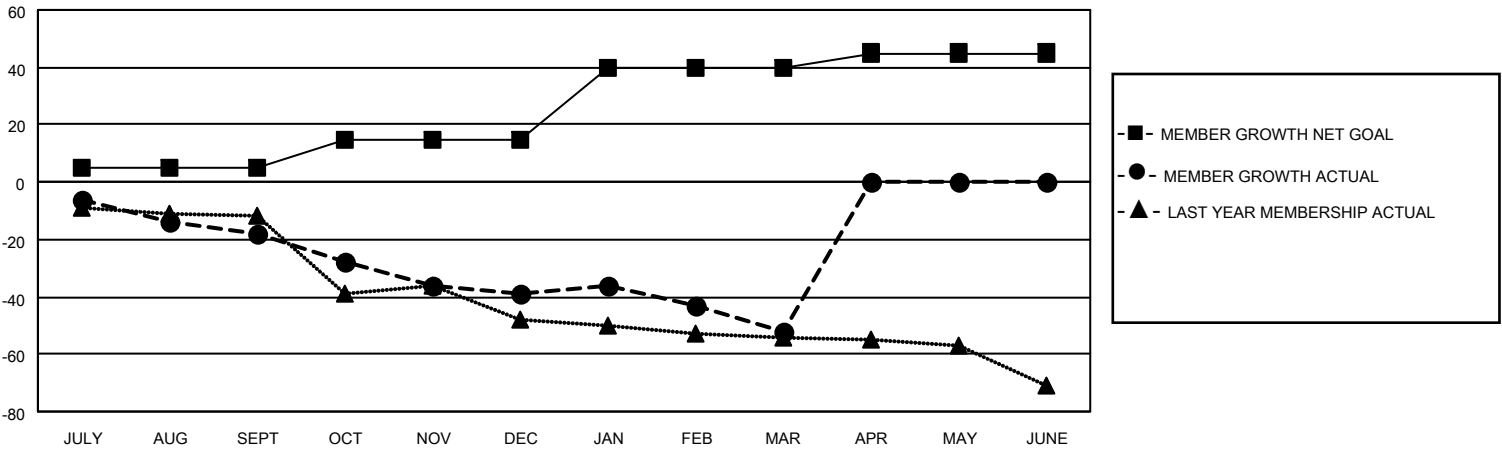
Clubs			
RESULTS FOR 2020-2021			
QUARTER	NEW CLUB GOAL	NEW CLUBS	DROPPED CLUBS
JULY/AUG/SEPT	0	0	0
OCT/NOV/DEC	1	0	0
JAN/FEB/MAR	1	0	0
APR/MAY/JUNE	0	0	0

Members			
RESULTS FOR 2020-2021			
QUARTER	MEMBER GROWTH NET GOAL	MEMBER GROWTH ACTUAL	DROPPED MEMBERS ACTUAL (including transfers)
JULY/AUG/SEPT	5	4	22
OCT/NOV/DEC	10	5	25
JAN/FEB/MAR	25	8	19
APR/MAY/JUNE	5	0	0

GOALS AND ACTUAL NEW CLUBS CUMULATIVE



GOALS AND ACTUAL MEMBERS CUMULATIVE



DROPPED CLUBS: 0	6 CLUBS OF 39 ADDED 1 OR MORE NEW MEMBERS	<u>GENDER DISTRIBUTION</u>
<u>DROPPED MEMBERS</u>	CLICK HERE FOR CUMULATIVE MEMBERSHIP DATA	MALE 681 (76.35%)
DECEASED 12		FEMALE 211 (23.65%)
CLUB CANCELLED 0		TOTAL FAMILY UNIT MEMBERS 124
OTHER 54		FAMILY MEMBERS PAYING HALF DUES 62
TOTAL 66		